



ISTITUTO DI EMATOLOGIA
"L. E. A. SERÀGNOLI"

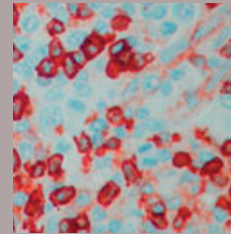


SERVIZIO SANITARIO REGIONALE
EMILIA-ROMAGNA
Azienda Ospedaliero - Universitaria di Bologna



ALMA MATER STUDIORUM
UNIVERSITÀ DI BOLOGNA
DIPARTIMENTO DI MEDICINA SPECIALISTICA
DIAGNOSTICA E SPERIMENTALE

2012...2015. T-Cell Lymphomas: We are illuminating the darkest of tunnels



PROGRAM

Bologna,
ROYAL HOTEL CARLTON
April 27-29, 2015

Presidents: **Stefano A. Pileri**
Pier Luigi Zinzani
Co-President: **Michele Cavo**
Honorary President: **Sante Tura**

Requested Auspices:

UNIVERSITÀ DEGLI STUDI DI BOLOGNA

REGIONE EMILIA-ROMAGNA

**AZIENDA OSPEDALIERO-UNIVERSITARIA
DI BOLOGNA**

**AIL ASSOCIAZIONE ITALIANA CONTRO
LE LEUCEMIE – LINFOMI E MIELOMA**

SEZIONE DI BOLOGNA

SIE-SOCIETÀ ITALIANA DI EMATOLOGIA

Scientific Secretariat

Pier Luigi Zinzani

**Istituto di Ematologia e di Oncologia Medica
“Lorenzo e Ariosto Seràgnoli”**

Università degli Studi di Bologna

Via Massarenti, 9 - 40138 Bologna, Italy

Phone +39 051 6363680 - Fax +39 051 6364037

E-mail: pierluigi.zinzani@unibo.it

Organizing Secretariat

Studio E.R. Congressi - Triumph Group

Via Marconi, 36 - 40122 Bologna, Italy

Phone +39 051 4210559 - Fax +39 051 4210174

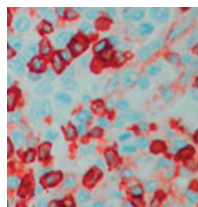
E-mail: ercongressi@thetriumph.com

www.ercongressi.it



Faculty:

Ranjana	Advani	Stanford, USA	Francesco	Onida	Milano, Italy
Stephen M.	Ansell	Rochester, USA	Fabrizio	Pane	Napoli, Italy
Martine	Bagot	Paris, France	Marco	Paulli	Pavia, Italy
Emilio	Berti	Milano, Italy	Stefano A.	Pileri	Bologna-Milano, Italy
Lorenzo	Cerroni	Graz, Austria	Nicola	Pimpinelli	Firenze, Italy
Wing C.	Chan	Duarte, USA	Miguel A.	Piris	Madrid, Spain
Bruce D.	Cheson	Washington, USA	H. Miles	Prince	Melbourne, Australia
Bertrand	Coiffier	Lyon, France	Barbara	Pro	Philadelphia, USA
Paolo	Corradini	Milano, Italy	Pietro	Quaglino	Torino, Italy
Francesco A.	D'Amore	Aarhus, Denmark	Vincent	Ribrag	Villejuif, France
Ghandi	Damaj	Amiens, France	Elena	Sabattini	Bologna, Italy
Claire	Dearden	London, United Kindom	Marco	Santucci	Firenze, Italy
Reinhard	Dummer	Zurich, Switzerland	Kerry J.	Savage	Vancouver, Canada
Madeleine	Duvic	Houston, USA	Andrei R.	Shustov	Seattle, USA
Brunangelo	Falini	Perugia, Italy	Helene	Sicard	Marseille, France
Michelle	Fanale	Houston, USA	Kensei	Tobinai	Tokyo, Japan
Massimo	Federico	Modena, Italy	Lorenz	Trümper	Göttingen, Germany
Adolfo	Ferrando	New York, USA	Kunihiro	Tsukasaki	Chiba, Japan
Francine	Foss	New Haven, USA	Julie M.	Vose	Omaha, USA
Gianluca	Gaidano	Novara, Italy	Sean	Whittaker	London, United Kingdom
Carlo	Gambacorti-Passerini	Monza, Italy	Rein	Willemze	Leiden, The Netherlands
Philippe	Gaulard	Créteil, France	Motoko	Yamaguchi	Tsu, Japan
Martin-Leo	Hansmann	Frankfurt am Main, Germany	Pier Luigi	Zinzani	Bologna, Italy
Steven M.	Horwitz	New York, USA	Emanuele	Zucca	Bellinzona, Switzerland
Hui-Qiang	Huang	Guangzhou, China			
Giorgio	Inghirami	New York, USA			
Arnaud	Jaccard	Limoges, France			
Elaine S.	Jaffe	Bethesda, USA			
Youn H.	Kim	Stanford, USA			
Won Seog	Kim	Seoul, Korea			
Yok Lam	Kwong	Hong Kong, China			
Bharat	Nathwani	Los Angeles, USA			
Owen A.	O'Connor	New York, USA			



2012...2015.
T-Cell Lymphomas:
We are illuminating
the darkest of tunnels

Monday April 27, 2015

02.30 p.m. *Welcome and Introduction*

The T-cell “World”

Chairmen: F. Pane, S.A. Pileri

02.45 p.m. *News from WHO E.S. Jaffe*

03.05 p.m. *Epidemiologic view on ALCL of the breast H.M. Prince*

03.25 p.m. *Prognostic models in PTCL J.M. Vose*

03.45 p.m. *Prognostic models in CTCL Y.H. Kim*

04.05 p.m. *The role of PET and T-cell specific response criteria B.D. Cheson*

Conventional and ongoing therapies

Chairmen: R. Advani, P.L. Zinzani

Standard front-line treatment of:

04.25 p.m. *PTCL-nos K.J. Savage*

04.45 p.m. *«The rest» of PTCL S.M. Horwitz*

05.05 p.m. *CTCL R. Willemze*

05.25 p.m. *ATLL K. Tobinai*

and the ongoing potential new alternatives:

05.45 p.m. *ACT-1/ACT-2 F.A. D'Amore, L. Trümper*

06.10 p.m. *CHOP vs. GEM-P C. Dearden*

06.20 p.m. *CHOP vs. A+CHP R. Advani*

06.30 p.m. *CHOP vs Ro-CHOP B. Coiffier*

Tuesday April 28, 2015

PTCL: morphology and pathobiology

Chairmen: B. Falini, B. Nathwani

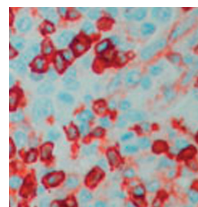
PTCL-NOS:

- 08.30 a.m. **Histology** *E. Sabbatini*
08.50 a.m. **Lennert's lymphoma** *M.L. Hansmann*
09.10 a.m. **Molecular genotyping** *A. Ferrando*
09.30 a.m. **Gene expression profiling** *W.C. Chan*
09.50 a.m. **AITL** *P. Gaulard*
10.10 a.m. **ALCL** *S.A. Pileri*
10.30 a.m. **Coffee Break**

PTCL and CTCL CD30+

Chairmen: M. Federico, M. Paulli

- 10.45 a.m. **CD30+ expression: real or virtual?** *S.A. Pileri*
Brentuximab vedotin in:
11.05 a.m. **ALCL** *B. Pro*
11.25 a.m. **PTCL-NOS/AILT** *M. Fanale*
11.45 a.m. **CTCL** *M. Duvic*



2012...2015.
T-Cell Lymphomas:
We are illuminating
the darkest of tunnels

NK/T-cell lymphoma: the role of asparaginase

Chairmen: W.S. Kim, K. Tobinai

- 12.05 p.m. **Japanese experience** *M. Yamaguchi*
- 12.20 p.m. **Hong Kong experience** *Y.L. Kwong*
- 12.35 p.m. **French experience** *A. Jaccard*
- 12.50 p.m. **American experience** *R. Advani*
- 01.05 p.m. **Chinese experience** *H.Q. Huang*
- 01.20 p.m. **Lunch**

PTCL: the “combo-step” of the new drugs

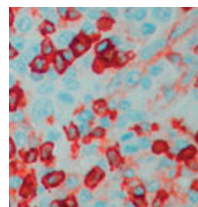
Chairmen: B.D. Cheson, P.L. Zinzani

- 02.30 p.m. **Pralatrexate with...** *O.A. O'Connor*
- 02.45 p.m. **Romidepsin and...** *M. Fanale*
- 03.00 p.m. **Belinostat plus...** *F. Foss*
- 03.15 p.m. **Everolimus with...** *W.S. Kim*
- 03.30 p.m. **Lenalidomide and...** *S.M. Horwitz*

PTCL: the new single agents

Chairmen: F. Foss, E. Zucca

- 03.45 p.m. **Alisertib** *O.A. O'Connor*
- 04.00 p.m. **Aplidin** *V. Ribrag*
- 04.15 p.m. **PD-1, PDL-1** *S.M. Ansell*
- 04.30 p.m. **Copanlisib** *P.L. Zinzani*
- 04.45 p.m. **What from the basket of BTK and PI3K inhibitors?** *S.M. Horwitz*
- 05.00 p.m. **Carfimizomib** *J.M. Vose*
- 05.15 p.m. **Bendamustine** *G. Damaj*
- 05.30 p.m. **Crizotinib** *C. Gambacorti-Passerini*



2012...2015.
T-Cell Lymphomas:
We are illuminating
the darkest of tunnels

Wednesday April 29, 2015

CTCL: morphology and pathobiology

Chairmen: E. Berti, S.A. Pileri

- 08.30 a.m. **Histology** *M. Santucci*
- 08.45 a.m. **Gene expression profiling** *S. Whittaker*
- 09.00 a.m. **The spectrum of CD8+ CTCL** *E. Berti*
- 09.15 a.m. **Unusual clinicopathologic variants of CTCL** *L. Cerroni*

**CTCL and New Drugs:
Emerging combination strategies**

Chairmen: N. Pimpinelli, P. Quaglino

- 09.30 a.m. **Pralatrexate with...** *M. Duvic*
- 09.45 a.m. **Pegylated liposomal doxorubicin** *R. Dummer*
- 10.00 a.m. **Bexarotene-containing regimens** *N. Pimpinelli*
- 10.15 a.m. **HS IPH4102 anti-KIR3DL2 mAb in CTCL** *H. Sicard*

Mogamulizumab inside the T-cell family

Chairman: K. Tobinai

- 10.30 a.m. **ATLL** *K. Tsukasaki*
- 10.45 a.m. **PTCL** *K. Tobinai*
- 11.00 a.m. **CTCL** *M. Duvic*

Important Pre-clinical Model with T-cell lymphoma

Chairman: G. Gaidano

- 11.15 a.m. **Putting preclinical pharmacology into perspective** *O.A. O'Connor*
11.35 a.m. **Experimental models** *M.A. Piris*
11.55 a.m. **Animal models** *G. Inghirami*

Allotransplant setting

Chairman: F. Onida

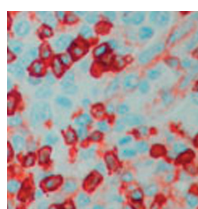
PTCL:

- 12.15 p.m. **American perspective** *A.R. Shustov*
12.30 p.m. **European perspective** *P. Corradini*

CTCL:

- 12.45 p.m. **European perspective** *M. Bagot*
01.00 p.m. **American perspective** *M. Duvic*
01.15 p.m. **Closing remarks**

Arrivederci al 2018!



2012...2015.
T-Cell Lymphomas:
We are illuminating
the darkest of tunnels

General Information

Meeting Venue

Royal Hotel Carlton

Via Montebello, 8 - 40121 Bologna, Italy

Phone +39 051 249361 - Fax +39 051 249724

How To Get There

- By car:* From the motorway, turn into the ring road ("Tangenziale") - Exit 7 "Fiera" and follow direction city center and railway station.
- By taxi:* From the airport about 30 minutes.
- By bus:* Bus 91 and Aerobus from the airport.
- By train:* From the railway station walking distance.

Official Language

English.

Registration Fee

Euro 400,00 (Italian VAT included)

The registration fee includes:

- Conference kit
- Participation in the scientific sessions
- Attendance Certificate
- Coffee breaks
- Lunch
- Slides of meeting

Registrations can be requested submitting the online registration form available on the website: www.ercongressi.it

Scientific Information

Slides

Slides must be in English. Computer videoprojection will be available in Power Point. Other requirements should be communicated to the Organizing Secretariat as soon as possible. Slides should be handed to the slide center one hour before the beginning of the session and collected at the end.

Badge

All registered participants, speakers and exhibitors will be given a badge which they must wear to be admitted to the scientific sessions.

Attendance certificate

A certificate will be given to all participants at the end of the Meeting.

Italian CME Credits

A request for Italian CME credits have been made as follows:

- Provider Studio ER Congressi SRL: ID 828-113853.
- No. **12 CME** credits for physicians (disciplines: Allergology and Clinical Immunology, Dermatology and Venereology, Hematology, Oncology, Pathological Anatomy, Clinical Biochemistry, Clinical Pathology), biologists and chemists.
- Educational objective: "guidelines-protocols-procedures".

European CME Credits

The program of the "T-Cell Lymphomas: We are illuminating the darkest of tunnels" has been reviewed and approved for CME accreditation by the European Hematology Association CME Unit. The EHA-CME Unit has approved this educational activity for no. **16 CME** credits for physicians and biologists.

To request credits, please fill in the questionnaire and return it to the registration desk at the end of the meeting.

We remind you that it is necessary to create an EHA-CME account on the EHA website: <http://eha-cme.org>.

Changes

Parts of the program may be changed without notice.

Scientific Coordinator

Pier Luigi Zinzani

Istituto di Ematologia e di Oncologia Medica

“Lorenzo e Ariosto Seràgnoli”

Università degli Studi di Bologna

Via Massarenti, 9 - 40138 Bologna, Italy

Phone +39 051 6363680 - Fax +39 051 6364037

E-mail: pierluigi.zinzani@unibo.it

Organizing Secretariat

Studio E.R. Congressi - Triumph Group

Via Marconi, 36 - 40122 Bologna, Italy

Phone +39 051 4210559 - Fax +39 051 4210174

E-mail: ercongressi@thetriumph.com

www.ercongressi.it